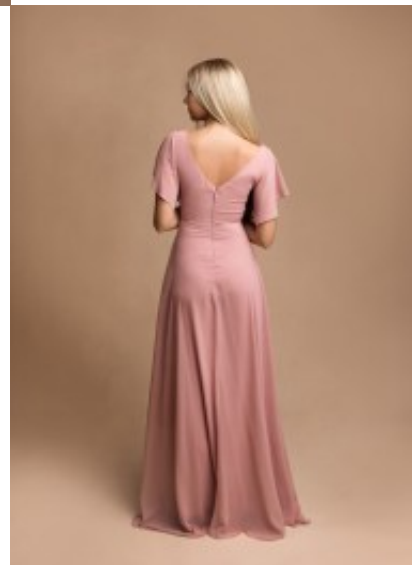


Gown 2337





Evening gown with short butterfly sleeves, slim fit styled formal garment, enhanced bodice with beautiful cleavage, high waistline adorned in rhinestones, ankle long flared skirt, tailored in chiffon with satin lining

Wisselprins 105,00 € Gewaardeerd

Korting

2-3 Days



[Stel een vraag over dit artikel](#)

Fabrikant [EVA LOLA](#)

Beschrijving

Evening maxi gown

Evening gown adorned thinestones, slim fit style maxi frock, form hug bodice with low cut V-shaped neckline, preformed & enhance burst line that supports beautiful cleavage, party garment with butterfly sleeves, pleated waistline & elastic band, tulip long skirt, tailored in mixed chiffon tulle with satin lining, choice of S / M / L

Fit: slim fit

Neckline: V-shaped neckline

Material inner layer: satin lining

Pattern: slim fit

Sleeves length: short butterfly sleeveless

Material outer layer: chiffon mix tulle

Wash instructions: non machine wash, non tumble dry

Eenheden in doos: 1