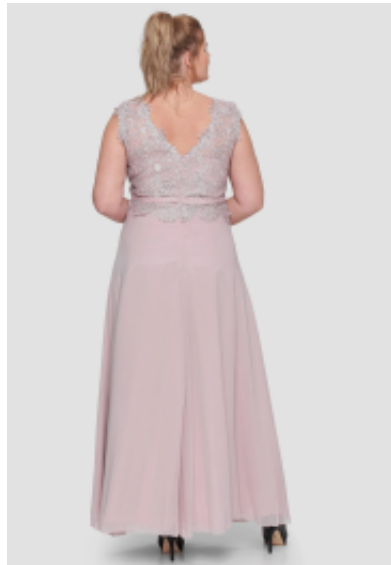
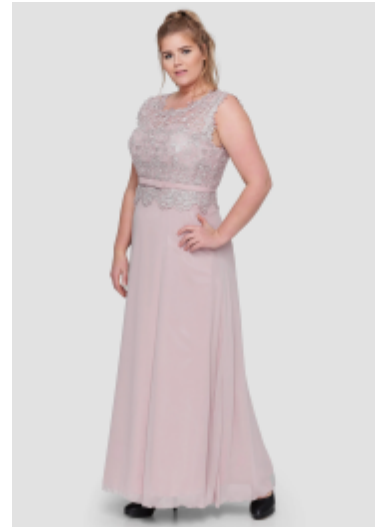


Gown 1567X







Gown with wide round neckline, maxi sheath style fashion, broad shoulder straps, high waistline adorned with adjustable belt, includes a matching scarf

Wanneer je bestelt vóór 15:00 Gewaardeerd
Korting

2-3 Days



[Stel een vraag over dit artikel](#)

Fabrikant [Juju-Christine](#)

Evening party gown

Maxi plus size gown, beautiful party frock consists in the upper part a coarse lace, which goes a bit over the skirt, looks like a 2 pieces outfit, high form enhanced waistline adorned ribbon bow, incorporated cups, broad shoulder straps, ensures perfect fit. Elegant A-shaped formal wear fashion, choice of XL / 2XL / 3XL / 4XL / 5XL

Fit: Fitted

Material lining: satin

Neckline: wide scoop neck

Pattern: formal wear

Details: adorned ribbon bow

Sleeves length: sleeveless

Material outer layer: chiffon

Washing instruction: non tumble dry, non machine wash

Eenheden in doos: 1

// // //