

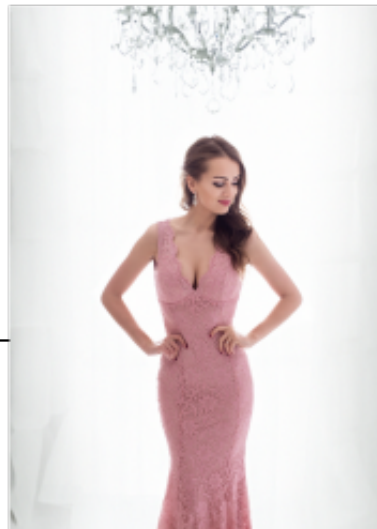
Altenagala.nl

gowns & accessories



Gown 2155





Embroidered lace gown, body top fit robe with V-shaped neckline, open back with beautiful cleavage, enhance burst line, trendy silhouette style gown with satin lining

Bestelgegevens: 15900g@waardeerd

Discount:



2-3 Days



[Ask a question about this product](#)

Manufacturer: [EVA LOLA](#)

Silhouette lace gown

Maxi gown with dip V neckline, slim fit embroiled lace chiffon sheath styled party robe, body shape top with open back, beautiful cleavage, broad shoulder straps, elastic back band, high pleated waistline, tulip skirt, fine fitting evening gown, choice of S / M / L

Fit: body hugging

Material lining: satin lining

Neckline: V-shaped neckline

Pattern: sheath style robe

Details: embroiled floral lace

Sleeve length: sleeveless

Material outer layer: stretch polyester

Washing instructions: do not tumble dry, dry clean only

Eenheden in doos: 1

// //