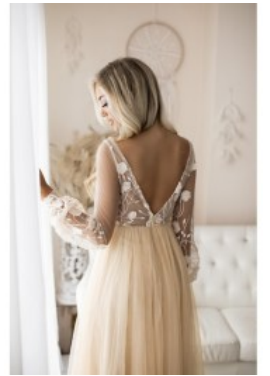


Gown 2255





Formal party gown, long sleeves maxi dress gown, fit & flair styled chiffon mix tulle frock, form fit torso with V-shaped neckline, open back with discrete zipper, enhanced burst line that ensures beautiful cleavage, pleated waistline with swirling skirt

Wij zijn gewaardeerd
Korting

2-3 Days



[Stel een vraag over dit artikel](#)

Fabrikant [EVA LOLA](#)

Gown adorned motive

Maxi gown with dip V neckline, body shape top with beautiful cleavage, long sleeves frock with open back, elegant party garment in chiffon adorned with floral motive, full satin lining, high flattery waistline with swirling skirt, fit & flair styled attire suitable for diner, choice of M / L

Material lining: satin lining

Neckline: dip V-shaped neckline

Pattern: A line robe

Details: adorned with floral motive

Sleeve length: long sleeves

Material outer layer: chiffon

Washing instructions: do not tumble dry, dry clean only

Eenheden in doos: 1

// // //