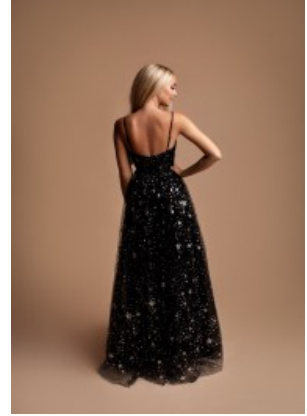


Gown 2403







Evening party gown with tulle, exclusive A-line gown, body hug bodice, torso with V-neckline, supports a beautiful cleavage, open back with straps, high pleated waistline combined with flared skirt

Wij zijn gewaardeerd

Korting

2-3 Days



[Stel een vraag over dit artikel](#)

Fabrikant [EVA LOLA](#)

Evening party gown

Evening maxi gown, A-line style frock, body hug torso with an enhanced bustline, V-neckline ensures beautiful cleavage, open back with thin band, high pleated waistline, flared skirt, chiffon mix tulle garment with satin lining, suitable for wedding guest, choice of S / M / L

Fit: good fit

Neckline: V-neckline

Pattern: fit and flair dress

Details: beautiful cleavage,

Sleeves length: sleeveless

Material inner layer: satin lining

Material outer layer: chiffon with tulle

Washing instructions: not suitable for the wash machine or dryer, dry cleaning

Eenheden in doos: 1

// // //