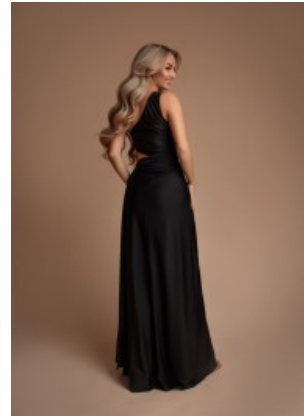


Gown 2435







Maxi evening gown with asymmetric neckline, form hug bodice, single shoulder strap, high pleated waistline with a side slit, has a discreet back zipper, swirling knee high split skirt

Wij hebben 25 stuks gewaardeerd

Korting

2-3 Days



[Stel een vraag over dit artikel](#)

Fabrikant [EVA LOLA](#)

Split maxi gown

Sexual evening gown with side slit, form fit torso with asymmetric neckline, single shoulder strap, high pleated waistline, covered back with zipper in the middle back seam, knee high slitted flared skirt, fit & flair polyester maxi piece, choice of S / M / L

Fit: fit & flair

Material inner layer: satin lining

Neckline: asymmetric neckline

Pattern: sleek dress

Details: beautiful cleavage

Sleeve length: sleeveless

Material outer layer: polyester

Washing instructions: non machine wash, do not tumble dry, dry clean

Eenheden in doos: 1

// // //