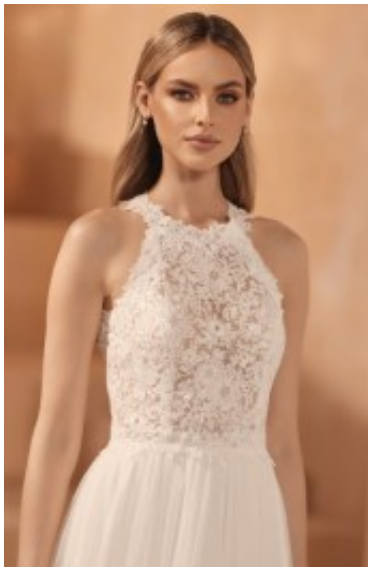




## Bridal Dress Zula





Wedding dress with cathedral train, halter neckline, open back, sleeveless A-line bridal gown, form fit bodice in floral lace, high waisted adorned semi cathedral train, swirling tulle skirt

~~€1195~~ €795

**14 Days**



[Stel een vraag over dit artikel](#)

Fabrikant [Bianco Evento](#)

### Sleeveless bridal gown

Sleeveless wedding dress, halter top A-line style gown, form hug bodice with high scoop neckline, open back, high pleated waistline adorned semi cathedral train, swirling skirt, mix lace pure tulle bridal reception party piece, tailored in the EU, choice of S / M / L / XL / 2XL , register free to view price online

Fit: plain

Material lining: satin

Neckline: halter neckline

Pattern: halter top wedding gown

Details: adorned train

Sleeves length: sleeveless

Material outer layer: pure tulle



Price class: € 949 - € 1049

Eenheden in doos: 1

---