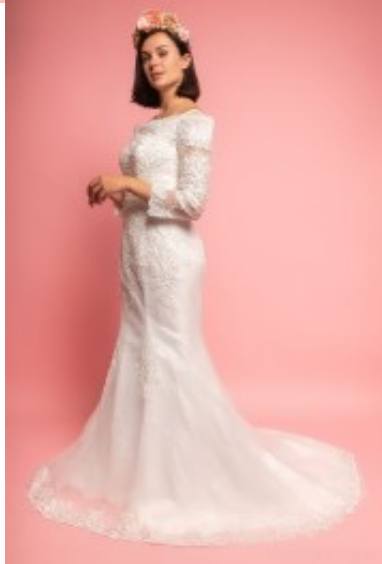


## Bridal Dress 1018







Trumpet wedding gown with long sleeves, off shoulder with wide V-neckline, form fit bodies in floral lace, enhance bustline and lacing in the back seam, high pleated waist, flared tulle skirt

Wij bezorgen u het gewaardeerd

Korting

7 Days



[Stel een vraag over dit artikel](#)

Fabrikant [Marie June](#)

### Trumpet wedding dress

Long sleeves wedding dress, trumpet style bridal gown in mix lace and tulle, form fit bodice with wide V-neckline, corsage with discreet zipper, lacing in the middle back seam, off shoulder garb suitable for reception, high pleated waistline, flared tulle skirt, with satin lining, choice of L / 2XL / 4XL / 6XL

Fit: good fit

Details: adorned stones

Neckline: wide V-neckline

Material inner layer: satin lining

Pattern: trumpet wedding dress

Sleeve length: long sleeves

Material outer layer: embroidered lace with tulle

Washing instructions: not suitable for the dryer, no washing machine

Eenheden in doos: 1

// // //