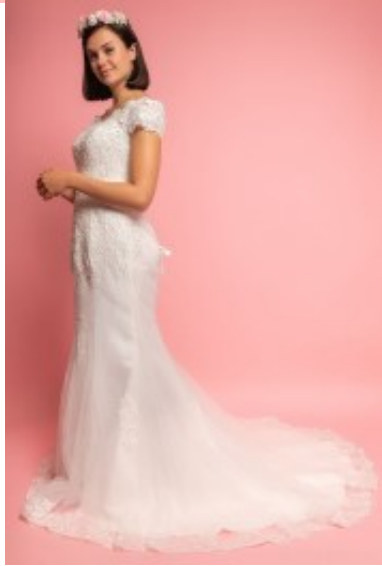


## Bridal Dress 1023







Wedding dress with corsage, form fit bodice with wide scoop neckline, trumpet styled bridal gown in mix lace and sheer tulle, high pleated waistline with back lacing, adorned ribbon bow, sleek skirt with flared edge

Wijde pleeglijn, 100% Gewaardeerd

Korting

7 Days



[Stel een vraag over dit artikel](#)

Fabrikant [Marie June](#)

### Bridal dress with train

Trumpet wedding dress with wide scoop neckline, form fit lace bodice with corsage for comfort and good fit, discrete zipper in middle back, with lacing and bow, short sleeves gown, high pleated waistline and skirt with flared edge, elegant bridal garb in mix tulle and embroiled lace with satin lining, choice of L / 2XL / 4XL / 6XL

Fit: nice fit

Neckline: wide scoop halslijn

Material inner layer: satin lining

Pattern: trumpet styled bridal dress

Details: adorned rhinestones

Sleeve Length: short sleeves

Material outer layer: embroiled lace, mix see through tulle

Washing instructions: do not tumble dry, dry clean

Eenheden in doos: 1

// // //