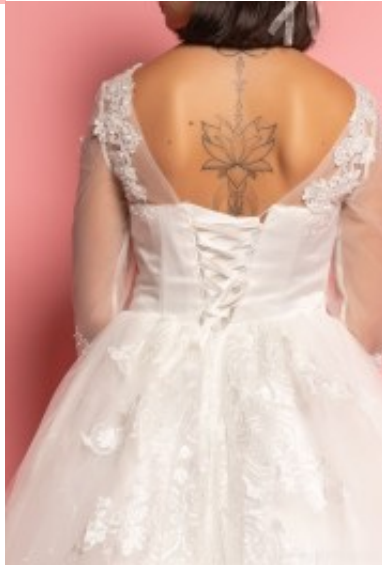
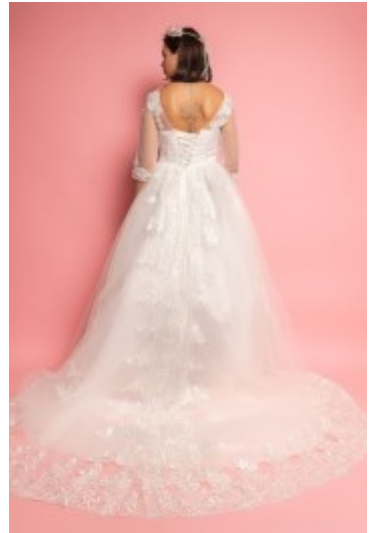


Bridal Dress 801







Duchess wedding dress, A-line gown with elbow length sleeves, enhanced bodice with wide scoop neckline, corsage ensures comfort, open back with lacing in the middle seam, high pleated waistline, flared skirt

Washing instructions: do not tumble dry, do not machine wash

Korting

7 Days



[Stel een vraag over dit artikel](#)

Fabrikant [Marie June](#)

Duchess bridal gown

Wedding dress with elbow-length sleeves, beautiful duchess styled gown adorned with rhinestones, form fit torso in embroiled lace, wide scoop neckline, preformed corsage that ensures comfortable wear, covered cleavage, discreet zipper, middle back lacing, high pleated waistline, flared skirt with train, finished with stretch polyester mix tulle, with satin lining, choice of L / 2XL / 4XL

Fit: good fit

Details: adorned rhinestones

Sleeve length: elbow long sleeves

Material inner layer: satin lining

Pattern: duchess style wedding dress

Material outer layer: stretch polyester mix lace & tulle

Washing instructions: do not tumble dry, do not machine wash

Eenheden in doos: 1

// // //