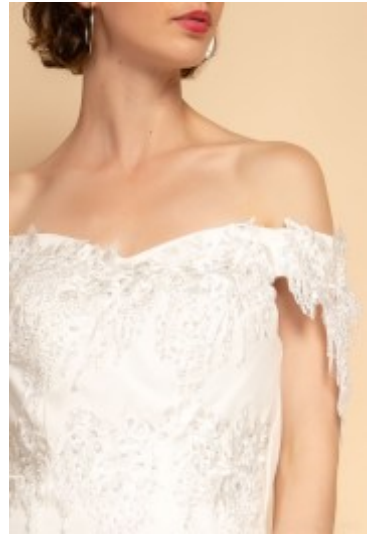


## Bridal Dress 9486







Bridal gown with sweetheart neckline, off shoulder style wedding dress adorned embroidery, form fit torso with enhanced bustline, back lacing, high waistline with tulip skirt, stretch polyester garment with satin lining

Wijde opening €55,00 Gewaardeerd

Korting

**7 Days**



[Stel een vraag over dit artikel](#)

Fabrikant [Marie June](#)

### **Embroidered bridal dress**

Wedding dress adorned embroidery, off shoulder bridal gown made of stretch polyester with satin lining, form fit bodice with sweetheart neckline, enhanced bustline that ensures good fit, discreet zipper, lacing in the middle back seam, high pleated waistline, tulip skirt, choice of L / 2XL / 4XL / 6XL

Fit: good fit

Neckline: sweetheart neckline

Sleeves length: sleeveless

Material inner layer: satin lining

Pattern: slim fit dress

Details: decorated with embroidery

Material outer layer: stretch polyester

Washing instructions: not suitable for the dryer, no washing machine

Eenheden in doos: 1

// // //