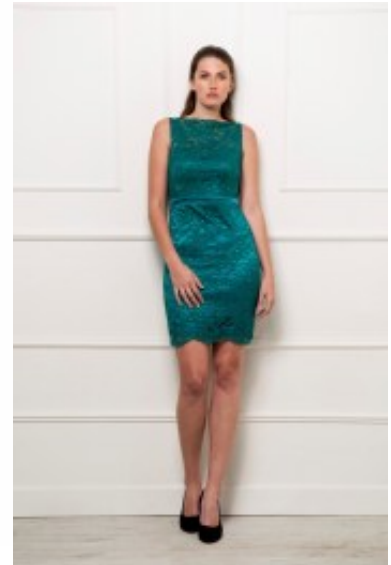




Cocktail Dress 8011





Cocktail dress with shoulder straps, slim fit midi length garb with scoop neckline, floral lace with full satin lining, preformed cups with straight fit skirt, back zipper closure

Wanneer je bestelt vóór 15:00 uur wordt het artikel verzonden op dezelfde dag

Korting

2-3 Days



[Stel een vraag over dit artikel](#)

Fabrikant [Lautinel](#)

Floral lace dress

Cocktail dress with scoop necklinne, midi length floral lace gown with preformed cups, slim fit styled garb with broad shoulder straps, covered back, zipper closure, body shape waistline adorned satin band combine with straight skirts, satin lining, choice of S / M / L / XL / 2XL

Fit: Form fit

Material lining: satin

Neckline: scoop neckline

Pattern: slim fit

Details: floral print lace



Sleeves length: sleeveless

Material outer layer: floral lace

Washing instructions: do not tumble dry, machine wash 30 c, fine wash

Eenheden in doos: 1
