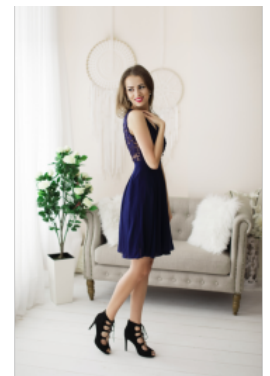


Cocktail Dress 1340





Cocktail dress with V-shaped neckline, open back garb with beautiful cleavage, fit and flair dress with wide shoulder straps, high pleated waistline, flared skirt, chiffon with satin lining

Wij bezorgen u het gewaardeerd

Korting

2-3 Days



[Stel een vraag over dit artikel](#)

Fabrikant [EVA LOLA](#)

Tea length dress

Cocktail dress with V-neck, open back gown with fine cleavage, body shape with broad shoulder straps, high pleated

waistline with knee length wide skirt, sleeveless chiffon mix lace robe with satin lining, choice of S / M / L, tea length dress, suitable for evening party

Fitting: form fit

Material inner layer: satin lining

Neckline: V-shaped neckline

Pattern: tea length gown

Details: pleated waistline

Sleeves: sleeveless with shoulder straps

Material outer layer: stretch polyester lace

Washing instructions: non machine wash, dry clean

Eenheden in doos: 1

// // //