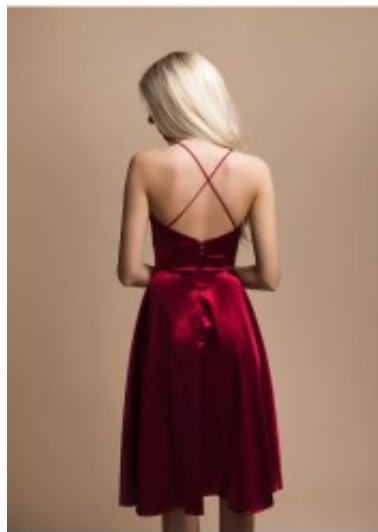
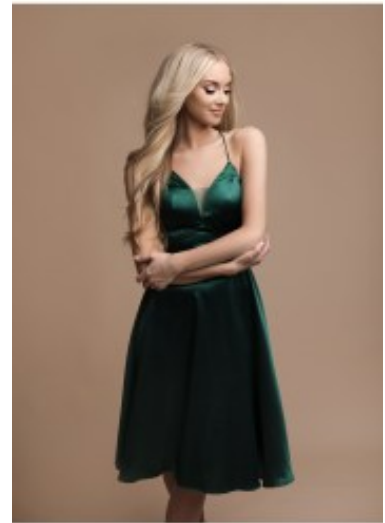


Cocktail Dress 2303







Cocktail dress with dip V neckline, form fit top with beautiful cleavage, open back with shoulder straps, high waistline with swirling short skirt, embroiled tulle overlay

Wij bezorgen u de bestelling gewaardeerd

Korting

2-3 Days



[Stel een vraag over dit artikel](#)

Fabrikant [EVA LOLA](#)

Sheath party dress

Sheath dress, open back with a form fit top, beautiful cleavage, thin shoulder straps, straight pleated waistline, swirling skirt, polyester with embroiled tulle overlay, satin lining, an elastic back band, midi length dress, suitable for the special events, choice of S / M / L

Fit: slim fit

Material inner layer: satin lining

Neckline: V-shaped neckline

Pattern: short sheath dress

Details: glossy

Sleeve length: sleeveless

Material outer layer: polyester with tulle overlay

Washing instructions: do not tumble dry, dry cleaning

Eenheden in doos: 1

// // //