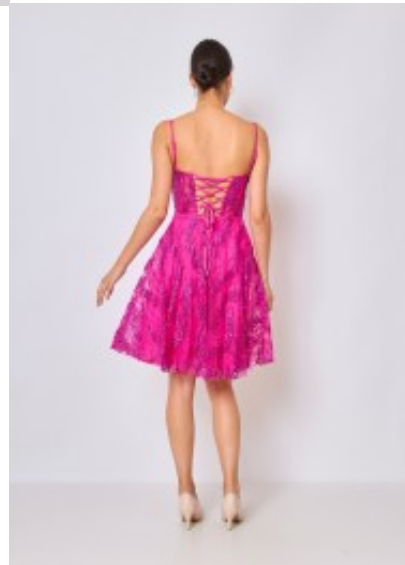
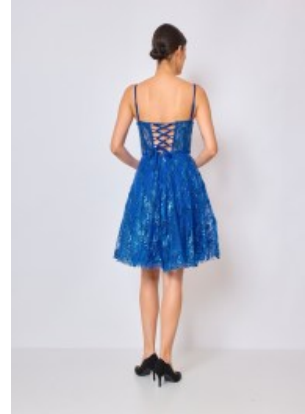


Cocktail Dress 2399







Cocktail dress with sweetheart neckline, form fit bodice, enhance bustline, supports beautiful cleavage, high pleated waistline, open back with lacing, combined with knee high flared skirt

Wij zijn niet verantwoordelijk voor schade van welke aard ook

Korting

2-3 Days



[Stel een vraag over dit artikel](#)

Fabrikant [EVA LOLA](#)

Corsage party dress

Corsage cocktail dress with thin shoulder straps, fitted bodice with a sweetheart neckline, enhanced bustline, supports beautiful cleavage, midi length dress, open back with lacing, high pleated waistline with wide flared skirt, fit & flair piece, suitable for wedding, in chiffon with satin lining, choice of S / M / L

Fit: good fit

Material inner layer: satin lining

Neckline: sweetheart neckline

Pattern: midi length dress

Details: adorned corsage

Material outer layer: chiffon

Washing instructions: not suitable for the washing machine or dryer, dry cleaning

Eenheden in doos: 1

// // //