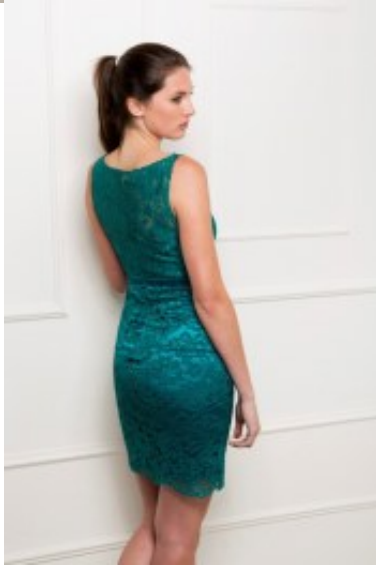


Dress 8011X







Cocktail dress, embroiled floral tulle top, form fit with shoulder straps, high waistline, mix lace fabric, full satin lining, zipper closure, knee length skirt

Wijde opening 2010 Gewaardeerd
Korting

2-3 Days



[Stel een vraag over dit artikel](#)

Fabrikant [Lautinel](#)

Embroided lace dress

Fancy cocktail gown, modern style, tulle covered cleavage, with embroiled floral lace fabric, shoulder straps, high waist line, flettering, supple, straight knee length skirt, full satin lining, back zipper closure

Eenheden in doos: 1

// // //