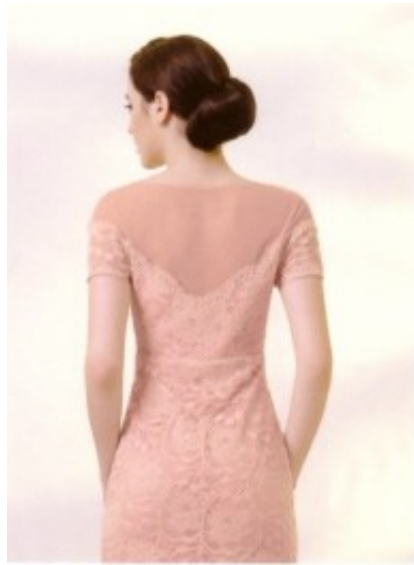


Cocktail dress 8153X







Short sleeves cocktail dress, sheath dress with wide round neckline, covered cleavage with straight short skirt, form enhanced with back zipper closure

Wash instructions: non machine wash, no tumble dry, dry cleaning recommended

Korting

2-3 Days



[Stel een vraag over dit artikel](#)

Fabrikant [Lautinel](#)

Short sleeves dress

Cocktail dress adorned glitters, midi length sheath styled garb, short sleeves with form fit torso, with high scoop neckline, enhanced burst line, covered cleavage cleavage, form fit straight waistline with back zipper, straight knee high skirt, fancy chiffon garment with soft satin lining, suitable wear for summer cocktail events, choice of sizes 2XL / 3XL

Fit: form fit

Material inner layer: soft satin lining

Neckline: scoop neckline

Style: tea length

Details: adorned pearls

Sleeves length: short sleeves

Material outer layer: supple chiffon

Wash instructions: non machine wash, no tumble dry, dry cleaning recommended

Eenheden in doos: 1

// // //