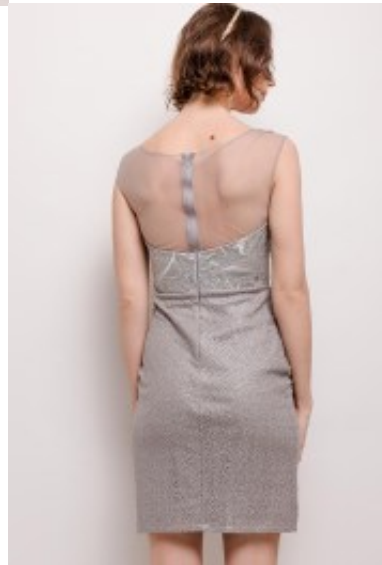


Cocktail Dress 8167







Cocktail dress adorned tulle, polyester sheath styled with high scoop neckline, adorned rhinestones with broad shoulder straps, back zipper in the middle seam, full satin lining, fancy party wear

Wij bezorgen u het gewaardeerd

Korting

2-3 Days



[Stel een vraag over dit artikel](#)

Fabrikant [Lautinel](#)

Dress adorned rhinestones

Cocktail dress, body shape top with high scoop neckline, see through tulle covered, a fake sweetheart neckline with broad shoulder straps, sheath style robe with support burst line, preformed cups, high waistline with short tulip skirt, zipper in the middle seam, stretch polyester gown with full satin lining, choice of S / M / L

Fit: Form fit

Material inner layer: satin

Neckline: scoop neckline

Pattern: sheath dress

Details: preformed cups

Sleeve length: sleeveless

Material outer layer: stretch polyester

Washing instructions: do not tumble dry, hand wash, luke warm machine wash

Eenheden in doos: 1

// // //