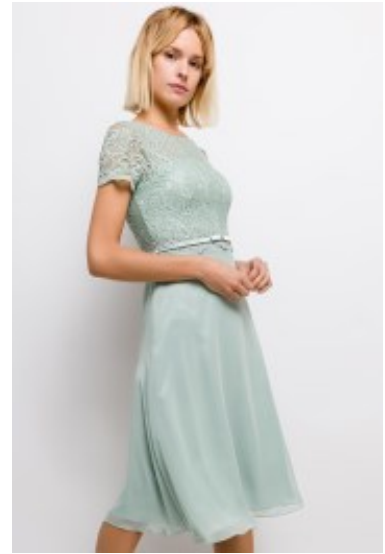


## Cocktail dress 8198







Cocktail dress adorned satin waistline, short sleeves midi length with high scoop neckline, embroiled lace covered cleavage, slim fit with back zipper, high satin waistband combine straight skirt, form fit polyester mix lace sheath dress with full lining

**Wijde opening** Gewaardeerd  
Korting

**2-3 Days**



[Stel een vraag over dit artikel](#)

Fabrikant [Lautinel](#)

### Short sleeves dress

Cocktail dress with high closed scoop neckline, fitted body with reinforced bustline, embroidered lace covered cleavage, short sleeved midi dress featuring a center back seam zip, a high flattering satin waistband and a sleek skirt, the summer update for your wardrobe, pick from M / L / XL

Fit: slim fit

Material inner layer: satin lining

Neckline: scoop neckline

Pattern: tight midi dress

Details: decorated with pearls

Sleeve length: short sleeves

Material outer layer: mix polyester lace

Washing instructions: do not tumble dry, do not dry clean

Eenheden in doos: 1

// // //