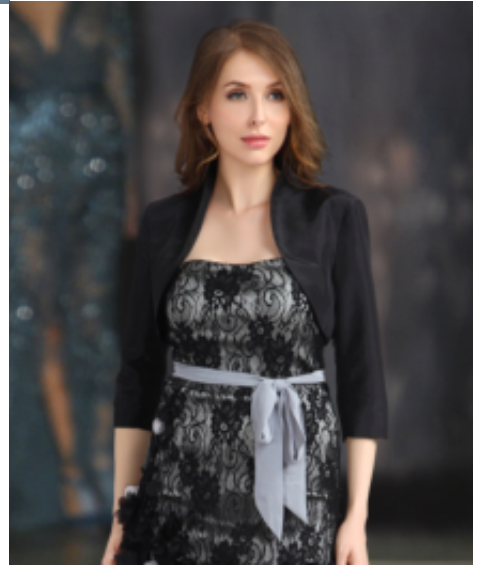
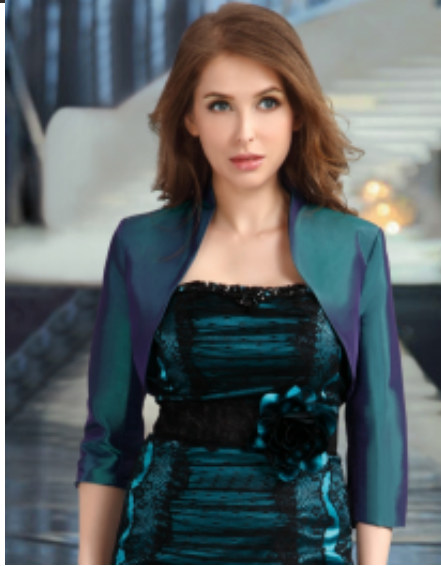
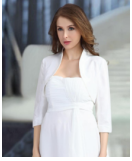


Long sleeves bolero 015







Taffeta satin bolero with three quarter sleeves, formal wear female garment, slim fit styled jacket completes your party outfit, must have accessories, trendy & comfortable addition to your collection

Wij zijn gewaardeerd

Korting

2-3 Days



[Stel een vraag over dit artikel](#)

Fabrikant [Juju-Christine](#)

Satin bolero jacket

Taffeta satin bolero, flat collar dress jacket with three quarter long sleeves, slim fit with full soft lining, supports beautiful cleavage, adds style to your party out fit, female fashion must have accessory, formal wear garment, choice of S / M / L / 2XL

Fitting: perfect form fit

Material inner layer: satin lining

Sleeves length: elbow long

Details: collarless jacket

Outer layer material: matte satin

Care guide: non tumble dry, non machine wash

Eenheden in doos: 1

// // //