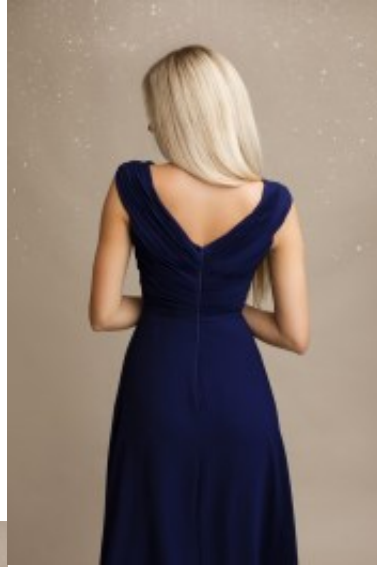




Dress 1390







Party dress with V-neckline, slim fit maxi garb with knee high split, open back with broad shoulder straps, high pleated waistline & tulip skirt, chiffon garment with satin lining

~~Wijde opening~~ Gewaardeerd
Korting

2-3 Days



[Stel een vraag over dit artikel](#)

Fabrikant [EVA LOLA](#)

Maxi party dress

Maxi party dress, sheath style piece with dip V-neckline, open back & beautiful cleavage, broad shoulder straps, high pleated waistline, tulip skirt, back zipper closure, body enhance chiffon robe with satin lining, comfortable, trendy, suitable as prom girl piece, choice of S / M / L

Fit: Fitted

Material inner layer: satin

Neckline: V-neckline

Pattern: sheath dress

Details: knee high split

Sleeve length: sleeveless

Material outer layer: polyester with floral motive

Washing instructions: non machine wash, do not tumble dry, dry clean only

Eenheden in doos: 1