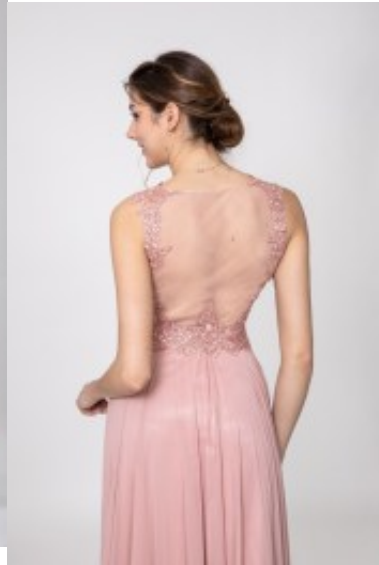




Dress 8222





Embroidered A-lijn maxi dress, form fit bodice with deep V-neckline, sheer tulle covered back, enhanced bustline and wide shoulder straps, high pleated waist and flared skirt, fancy polyester garb suitable for formal events

Wanneer je bestelt vóór 15:00 uur wordt de bestelling dezelfde dag nog verzonden

Korting

2-3 Days



[Stel een vraag over dit artikel](#)

Fabrikant [Lautinel](#)

Embroidered maxi dress

Evening dress adorned lace, form hug bodice with V-neckline, enhanced bust-line, features beautiful cleavage, broad shoulder straps, with see through tulle covered back, hides zipper in middle seam, high pleated waistline, flared skirt, finished in mix polyester and tulle, satin lining, choice of M / L / XL / 2XL

Fit: fit & flair

Material inner layer: satin lining

Neckline: V-neckline

Pattern: maxi party piece

Details: adorned with glitters



Sleeve length: Sleeveless

Material outer layer: polyester

Washing instructions: non machine wash, do not tumble dry, dry clean

Eenheden in doos: 1
