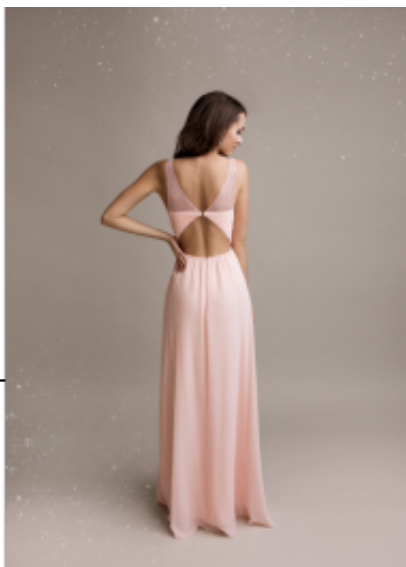


**Dress 1358**





Maxi dress with open back, fit & flair with beautiful cleavage, modified A line with a dip cup V-neckline, high pleated waistline with swirling skirt

Wash instructions: non machine wash, donot tumble dry, dry cleaning

**2-3 Days**



[Stel een vraag over dit artikel](#)

Fabrikant [EVA LOLA](#)

### Evening party dress

Maxi party dress, fancy modified A-line garb, form fit bodice, torso with V-neckline, enhanced burstline that supports beautiful cleavage, open back, high pleated waistline with swirling skirt, fit & flair chiffon evening piece with satin lining, choice of S / M / L

Fit: fit & flair

Material inner layer: satin lining

Neckline: V-neckline

Pattern: modified A-line

Details: open back

Material outer layer: supple chiffon

Sleeves length: sleeveless

Wash instructions: non machine wash, donot tumble dry, dry cleaning

Eenheden in doos: 1

// // //

---