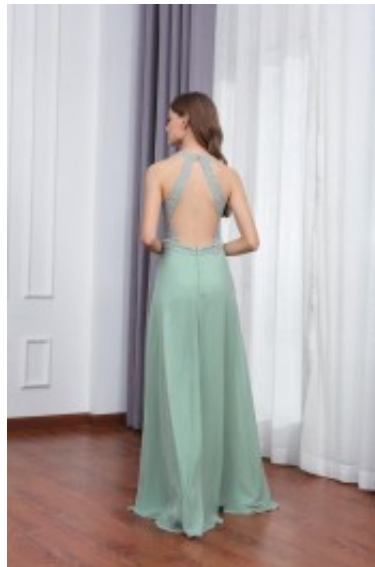


## Dress 8190





Party dress, body shape top with open back, high scoop neckline, floral lace covered cleavage, back straps, high pleated waistline with swirling skirt, chiffon mix floral lace with satin lining

Washing instructions: do not tumble dry, dry clean only  
Korting

**2-3 Days**



[Stel een vraag over dit artikel](#)

Fabrikant [Lautinel](#)

### Sequins adorned dress

Party dress, halter top maxi robe, body shape with scoop neckline, open back with straps, floral lace covered cleavage, preformed burstline, high pleated waistline combine swirling skirt, chiffon mix lace party dress with full satin lining, back zipper closure, choice of S / M / L / XL / 2XL, suitable wear for wedding guest

Fit: form enhancing

Material inner layer: satin lining

Neckline: V-shaped neckline

Pattern: modified A line robe

Details: adorned sequins

Sleeve length: sleeveless

Material outer layer: chiffon mix lace

Washing instructions: do not tumble dry, dry clean only

Eenheden in doos: 1

// // //