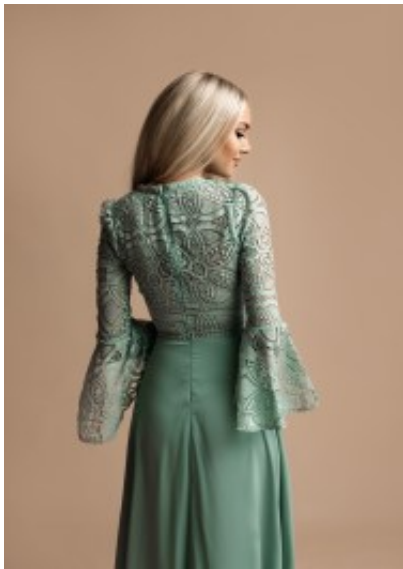


## Gown 2297





Maxi gown with long sleeves in lace and sweetheart body, enhanced bustline that creates a beautiful cleavage, covered back with zipper in the middle seam, flattering waistline, ladies that prefer have their shoulders and arms covered, elegant party piece

Washing instructions: niet te gewaardeerd  
Korting

**2-3 Days**



[Stel een vraag over dit artikel](#)

Fabrikant [EVA LOLA](#)

### Long-sleeves gown

Long sleeves maxi gown, slim fit style piece perfect by wedding, embroiled lace torso with V-neckline, enhanced bustline creates a beautiful cleavage, covered back with zipper in the middle seam, high pleated waistline and bell skirt, elegant piece in mix chiffon lace with satin lining, choice of S / M / L

Fit: good fit

Material inner layer: satin lining

Neckline: deep V-Neck

Pattern: slim fit party dress gown

Details: embroidered lace

Sleeves length: long Sleeves

Material outer layer: chiffon

Washing instructions: non machine wash, not suitable for the dryer, dry cleaning

Eenheden in doos: 1

// // //