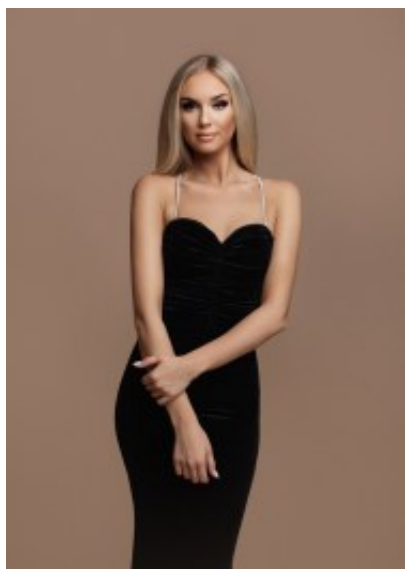


## Gown 2353





Gown, long sheath gown with top back split, slim fit with high covered round neckline, broad shoulder straps, high pleated waistline with ankle long tulip skirt, elastic back band

~~Wijde~~ ~~opvang~~ ~~toes~~ ~~at~~ ~~gewaardeerd~~

Korting

**2-3 Days**



[Stel een vraag over dit artikel](#)

Fabrikant [EVA LOLA](#)

### **Beaded sheath gown**

Maxi evening gown, slim fit style garment with beaded shoulder straps, form hug bodice with sweetheart neckline, enhanced bustline provides a beautiful cleavage, flattering waistline, flared skirt, smooth velvet dress with satin lining, suitable for wedding, choice of S / M / L

Fit: good fit

Material inner layer: satin

Neckline: deep V-neck

Details: lace up closure

Pattern: long fitted frock

Material outer layer: stretch polyester

Sleeve length: sleeveless

Washing instructions: no machine wash, not suitable for the dryer

Eenheden in doos: 1

// // //