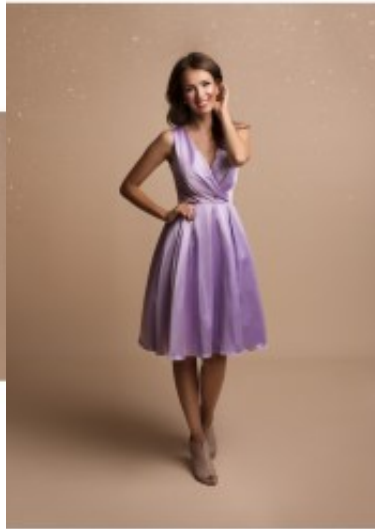


Cocktail Dress 2288





Satin cocktail dress, basic styled garb, fitted body with deep V-neckline, reinforced bustline with beautiful cleavage, open back and broad shoulder straps, high pleated waistline and tulip skirt, zipper in the middle seam

Washcode: 30°C, niet bleken, niet wassen met de hand, niet in de wasmachine, niet in de droger, niet strijken

Korting

2-3 Days



[Stel een vraag over dit artikel](#)

Fabrikant [EVA LOLA](#)

Satin tea dress

Cocktail dress with shoulder straps, form fit bodice with dip cut V-neckline, enhanced bustline creates a beautiful cleavage, triangular open back, high pleated waistline and flared above the knee skirt, zipper in the middle seam, trendy tea length dress in gloss satin, with full lining, choice of S / M / L

Fit: good fit

Material inner layer: satin lining

Neckline: V-neck

Pattern: tea length garb

Details: open back

Sleeve length: sleeveless

Material outer layer: gloss satin

Washing instructions: not suitable for the dryer, machine wash

Eenheden in doos: 1

// //