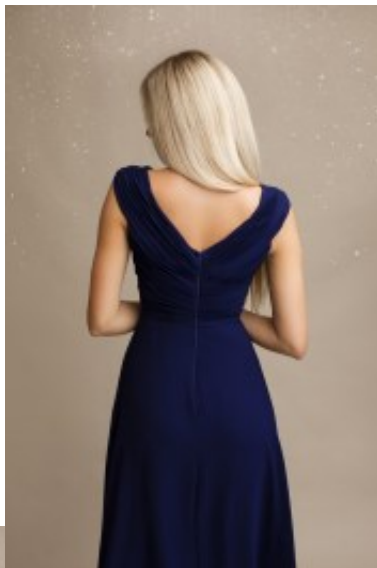


Dress 1390







Party dress with dip v-shaped neckline, slim fit maxi garb with knee high split, open back with broad shoulder straps, high pleated waistline & tulip skirt, chiffon garment with satin lining

~~COM_VIRTUEMART_PRODUCT_UNITS_IN_BOX1~~

Korting

2-3 Days



[Stel een vraag over dit artikel](#)

Fabrikant [EVA LOLA](#)

Maxi party dress

Maxi party dress, sheath style robe with dip cut v-shaped neckline, open back & beautiful cleavage, broad shoulder straps, high pleated waistline, tulip skirt, back zipper closure, body enhance chiffon robe with satin lining, comfortable & trendy, suitable as prom girl piece, choice of S / M / L

Fit: Fitted

Material inner layer: satin

Neckline: v-shaped neckline

Pattern: sheath robe

Details: knee high split

Sleeve length: sleeveless

Material outer layer: polyester with floral motive

Washing instructions: do not tumble dry, dry clean only

COM_VIRTUEMART_PRODUCT_UNITS_IN_BOX1

//