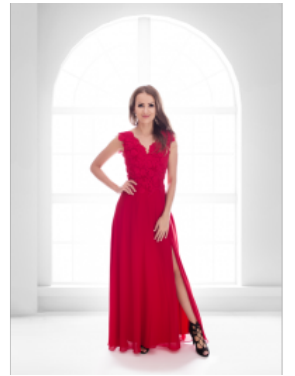


Dress 1326





Dress to impress, stretch polyester dress with dip cut V-shaped neckline, beautiful cleavage, open back with shoulder straps, slim fit chiffon dress with knee high split

~~€119,00~~ Gewaardeerd
Korting

2-3 Days



[Stel een vraag over dit artikel](#)

Fabrikant [EVA LOLA](#)

Evening dress

Evening dress, slim fit chiffon maxi dress, dip cut V neckline, beautiful cleavage, open back with shoulder straps, supple with high pleated waistline, straight ankle length skirt, suitable formal piece, elastic back band, choice of S / M / L body length, maxi sheath dress with split

Length: floor long

Fit : perfect fit

Material inner layer: satin lining

Neckline : V-shaped neckline

Pattern : maxi dress with split

Details: elastic back band

Sleeves length: sleeveless

Material outer layer: chiffon

Washing Instruction : non tumble dry, non machine wash

Eenheden in doos: 1

// // //