

**Altenagala.nl**

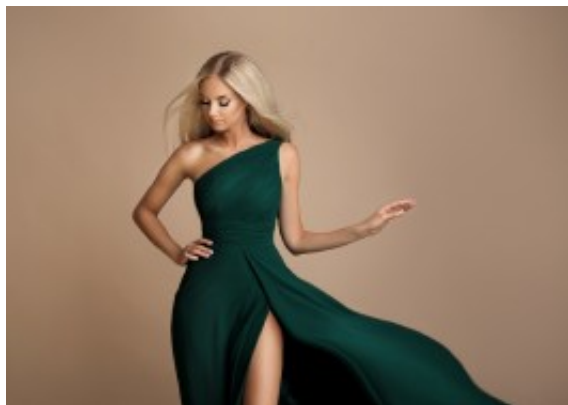
*patterns & accessories*



---

**Dress 1386**





Party dress with knee-high split, trendy long fit and flair style garb with a shoulder strap, suitable for any special occasion, fitted bodice with asymmetrical neckline, open back, high pleated waistline with flared skirt

Bestelling: 100g@waardeerd

Discount:

**2-3 Days**



[Ask a question about this product](#)

Manufacturer: [EVA LOLA](#)

### **Description**

Long open back dress, fit and flair style party dress with one shoulder strap, form fit torso with asymmetrical neckline, covered cleavage, enhanced bustline, high pleated waistline, wide flared skirt with knee-high split, latest trend in evening maxi garb, finished in flowing chiffon with satin lining, choice of S / M / L

Fit: good fit

Material inner layer: satin lining

Neckline: asymmetrical neckline

Pattern: fit and flair

Details: knee-high split

Sleeve length: sleeveless

Material outer layer: chiffon

Washing instructions: no suitable for the dryer, dry cleaning

Eenheden in doos: 1

// //