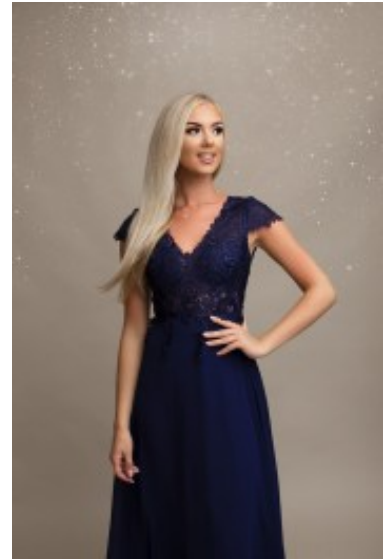


Dress 1387







Party dress with dip v-shaped neckline, form fit bodice in embroiled lace, open back & supported burst line ensures beautiful cleavage, short butterfly sleeves, discrete zipper in the seam, high pleated waistline & swirling skirt

Wij bezorgen u de bestelling gewaardeerd

Korting

2-3 Days



[Stel een vraag over dit artikel](#)

Fabrikant [EVA LOLA](#)

Embroided lace dress

Evening dress with beautiful cleavage, form fit bodice with dip V-shaped neckline, enhanced burst line & open back with discrete zipper in the middle seam, high pleated waistline combine with swirling skirts, fit & flair chiffon mix lace garb with full satin lining, choice of S / M / L

Fit: Form fit

Material inner layer: satin

Neckline: V-shaped neckline

Pattern: A line robe

Details: adorned sequins

Sleeves length: short butterfly sleeves

Material outer layer: polyester

Washing instructions: do not tumble dry , dry clean only

Eenheden in doos: 1

// // //