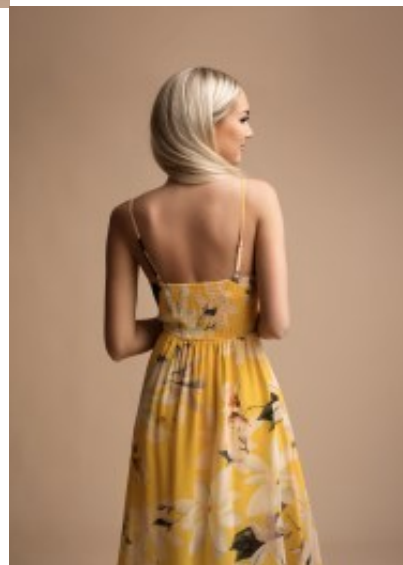


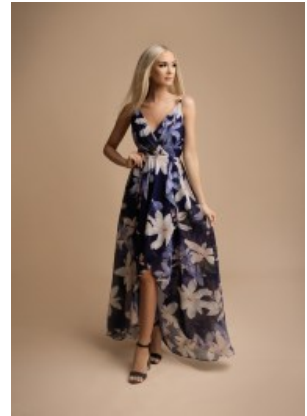
## Dress 1436





EF





Floral print salsa style open back dress, form fit torso with V-shaped neckline and adjustable thin shoulder straps, shows beautiful cleavage, high pleated waistline and flared high low skirt with split

**Wij bezorgen u de bestelling gewaardeerd**

Korting

**2-3 Days**



[Stel een vraag over dit artikel](#)

Fabrikant [EVA LOLA](#)

### **Floral print dress**

Floral print maxi dress, form fit bodice with V-neckline, open back garb with adjustable shoulder straps, supports beautiful cleavage, high pleated waistline with swirling high & low skirt with frontal split, trendy fit & flair style chiffon embroiled floral print garment, full satin lining, choice of S / M / L

Material inner layer: satin

Neckline: straight neckline

Pattern: fit & flair garb

Details: embroiled floral print

Sleeves: sleeveless

Material outer layer: chiffon

Washing instructions: non machine wash, do not tumble dry, dry cleaning

Eenheden in doos: 1

// // //