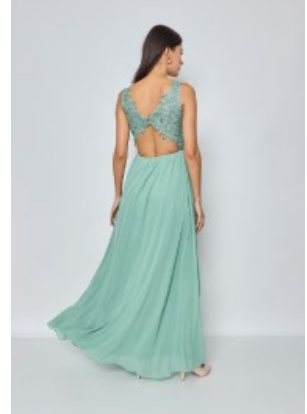


Dress 1500







Embroidered chiffon maxi dress, form fit torso that supports beautiful cleavage, has middle back opening with shoulder straps for comfortable wear, flattery waistline & swirling skirt with knee high split

Wij zijn gewaardeerd

Korting

2-3 Days



[Stel een vraag over dit artikel](#)

Fabrikant [EVA LOLA](#)

Embroidered maxi dress

Party dress with lace embroidery, fit and flair model, the form fit torso with V-neckline, supports a beautiful cleavage, thin shoulder straps, ensures a good fit, open back, high pleated waistline with flared skirt with slit, stylish chiffon dress with satin lining, suitable for school prom, choice of S / M / L

Fit: good fit

Material inner layer: satin

Neckline: V-neck

Details: decorated with embroidery

Material outer layer: chiffon

Pattern: fit and flair dress

Sleeve length: sleeveless

Washing instructions: not suitable for washing machine and dryer, dry cleaning

Eenheden in doos: 1

// // //