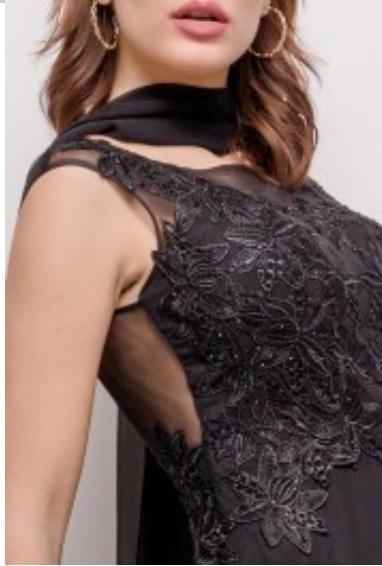


## Dress 8135







Exclusive maxi dress with matching scarf, form fit bodice with enhanced bustline, trendy adorned with embroidery, high pleated waistline with flared skirt, mix chiffon tulle with satin lining

Wij bezorgen u de bestelling gewaardeerd

Korting

**2-3 Days**



[Stel een vraag over dit artikel](#)

Fabrikant [Lautinel](#)

### **Embroided maxi dress**

Elegant party dress with matching scarf, fitted bodice with wide scoop neckline, enhanced bustline, covered cleavage and back, zipper in the middle seam, broad shoulder straps, high pleated waistline with flared skirt, fit and flair style dress perfect for every party, choice of M / L / 2XL / 3XL

Fit: form fit

Material inner layer: satin lining

Neckline: round neckline

Pattern: fit and flair dress

Details: decorated with embroidery

Sleeve length: without sleeves

Outer layer material: chiffon mix tulle

Washing instructions: do not machine wash, tumble dry, dry clean

Eenheden in doos: 1

// // //