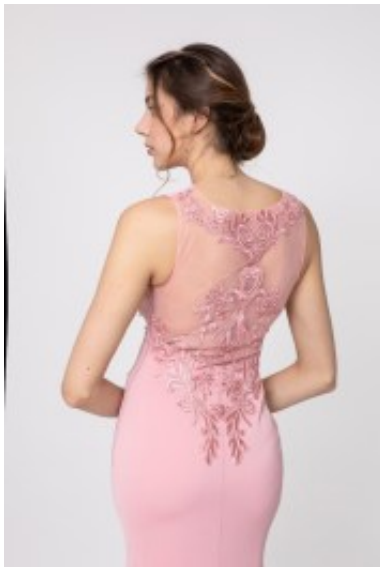




## Dress 8180





Metallic thread embroiled dress, trendy polyester blend tulle dress with satin lining, fitted bodice with V-neckline, reinforced bustline, wide shoulder straps, flattering waistline and bell skirt, suitable for wedding guest

Wijdeopng95h00 Gewaardeerd  
Korting

**2-3 Days**



[Stel een vraag over dit artikel](#)

Fabrikant [Lautinel](#)

### Embroided maxi dress

Party dress with metallic thread embroidery, elegant sleek style with bell skirt, body hug torso with V-neckline and wide shoulder straps, enhance burst line, sheer tulle covered back, flattering waistline creates a slim fit look, side seam zip, polyester blend tulle dress with satin lining, choice of S / M / L / XL / 2XL / 3XL

Fit: Good fit

Material inner layer: satin lining

Neckline: V-neck

Pattern: modified A line

Details: adorned with embroidery

Sleeve length: Sleeveless

Material outer layer: polyester mix tulle

Washing instructions: do not tumble dry, dry clean



Eenheden in doos: 1

---