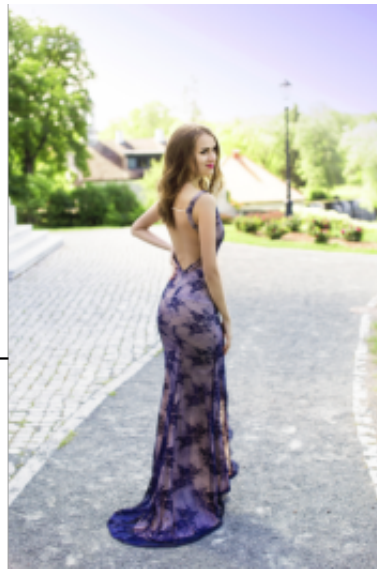




Gown 2121





Gown, floral lace fabric with full lining, form enhanced top met short sleeves, round neckline with high waistline, adorned with ribbon bow

Wanneer je bestelt op werdags vóór 15.00 uur wordt het besteld voor de volgende werkdag vóór 10.00 uur.
Korting

2-3 Days



[Stel een vraag over dit artikel](#)

Fabrikant [EVA LOLA](#)

Mermaid evening gown

Adorned cathedral train party gown, form hug bodice with V-neckline, has enhanced burst-line, supports fine cleavage, high pleated waistline, feature satin strap, knee high slit skirt, elegant embroiled floral lace gown, with satin lining, choice of S / M / L

Fit: slim fit

Material inner layer: satin lining

Neckline: V-neckline

Pattern: sheath styled gown

Details: knie high split



Material outer layer: embroiled floral lace

Sleeves length: sleeveless

Washing instructions: do not machine wash, non tumble dry, dry clean

Eenheden in doos: 1