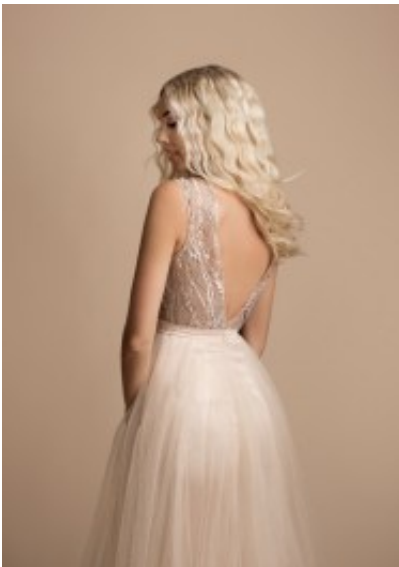




## Gown 2320





Exclusive maxi frock adorned with embroidery, form fit torso with enhanced bustline, scoop neckline, broad shoulder straps, deep triangle open back, high pleated waistline and flared skirt, princess line ball gown with satin lining

Washing instructions: do not tumble dry, dry clean

Korting

**2-3 Days**



[Stel een vraag over dit artikel](#)

Fabrikant [EVA LOLA](#)

### Embroidered maxi gown

Mixed tulle chiffon evening frock, embroidered maxi gown with see through tulle torso, scoop neckline and enhanced bustline, supports beautiful cleavage, triangular open back, elegant party piece, high pleated waistline with flared skirt, princess line ball gown with satin lining, suitable garment for diner or formal engagement, choice of S / M / L

Fit: good fit

Material inner layer: satin lining

Neckline: scoop neckline

Pattern: long A-line ball gown

Details: embroidered floral motive

Sleeve length: sleeveless

Material outer layer: transparent tulle mix chiffon

Washing instructions: do not tumble dry, dry clean



Eenheden in doos: 1