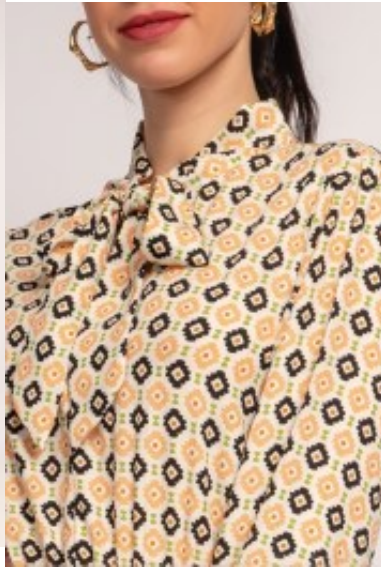


Dress 3475





Printed long sleeves maxi dress, form fit top with knotted collar, high covered neckline & back, high pleated waistline with swirling skirt, geometric patterned garb adorned glistening threads, polyester with full satin lining

Wij beschikken over 400000 artikelen op voorraad
Korting

2-3 Days



[Stel een vraag over dit artikel](#)

Fabrikant [FLAM MODE](#)

Beschrijving

Long-sleeves dress

Printed maxi dress adorned with glistening threads, long sleeves garb with knotted collar, geometric model with a high closed neckline, cleavage & back, high pleated waistline, swirling skirt, stretch polyester garment with satin lining, suitable wear for semi formal events, choice of S / M / L

Fit: Fit & flair

Material lining: satin lining

Neckline: knotted collar

Pattern: swirling dress

Details: knotted collar

Sleeves length: long sleeves

Material outer layer: stretch polyester

Washing instructions: do not tumble dry, dry clean only

Eenheden in doos: 1

// // //