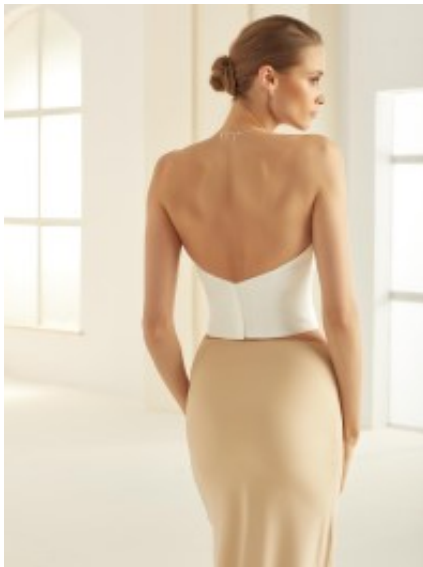




Corset 300





Strapless satin corset, body con top with preformed cups, dip cut sweetheart neckline that enhances beautiful cleavage, discrete back zipper closure

Wijzigingen
Korting

2-3 Days



[Stel een vraag over dit artikel](#)

Fabrikant [Bianco Evento](#)

Sweetheart neckline

Beautiful corset with dip sweetheart neckline, body hug top with preformed cups, supported bust line, strapless satin bustier with discrete zipper, adds little extra to your outfit, designed & tailored in the EU, with satin lining, gift yourself the style, completes your bridal wear fashion, choice of S / M / L / XL / 2XL
Fit: slim fit

Details: enhance bust line

Neckline: dip sweetheart neckline

Material inner layer: satin lining



Pattern: strapless corset

Sleeves length: sleeveless

Material outer layer: high quality satin

Washing instructions: non tumble dry, non machine wash, dry clean

Eenheden in doosje 1