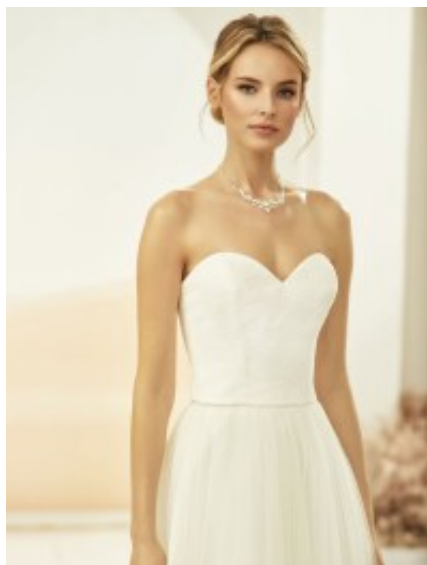


Corset 321





Bridal lace corset, body con style bustier top with enhanced burst line, adjustable thin shoulder straps for support, soft satin lining, suitable march for skirt

Wijde opvang 4100 Gewaardeerd
Korting

2-3 Days



[Stel een vraag over dit artikel](#)

Fabrikant [Bianco-Event](#)

Bridal lace corset

Beautiful corset with dip sweetheart neckline, body hug top with preformed burst line, thin adjustable shoulder straps, adds little extra to your outfit, designed & tailored in high quality lace with satin lining, in Europe, gift yourself the style, completes your bridal wear fashion, choice of S / M / L / XL / 2XL

Fit: slim fit

Details: enhance burst line

Neckline: dip sweetheart neckline

Material inner layer: satin lining

Pattern: corset top

Sleeves length: sleeveless

Material outer layer: high quality lace

Washing instructions: non tumble dry, non machine wash, dry clean

Eenheden in doos: 1

// // //