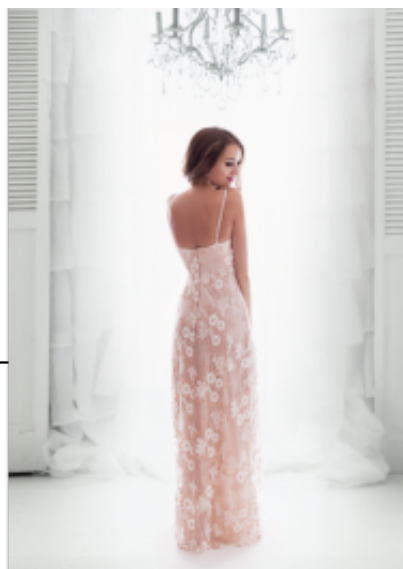


Gown 2144





Maxi gown with tulle V-shaped neckline, get you noticed. Featuring a cut-out beaded neckline, continuing round to the back, this sleek dress adds a touch of Hollywood glamour to your wardrobe

Wanneer je bestelt vóór 10:00 uur 's ochtends wordt je bestelling dezelfde dag nog verzonden. Gewaardeerd
Korting

2-3 Days



[Stel een vraag over dit artikel](#)

Fabrikant [EVA LOLA](#)

Maxi party gown

Evening maxi gown adorned sequins, form fit torso with thin shoulder straps, V-shaped neckline boosting an enhanced & supported bustline, with beautiful cleavage, open back frock with high pleated waistline, straight skirt with knee high split, choice of S / M / L

Fit: Form fit

Neckline : scoop V-shaped neckline

Pattern: silhouette styled frock

Details: adorned sequins

Material inner layer: satin lining

Sleeve length : sleeveless

Material outer layer: chiffon, tulle

Washing instructions: non machine wash, do not tumble dry, dry clean only

Eenheden in doos: 1

// // //