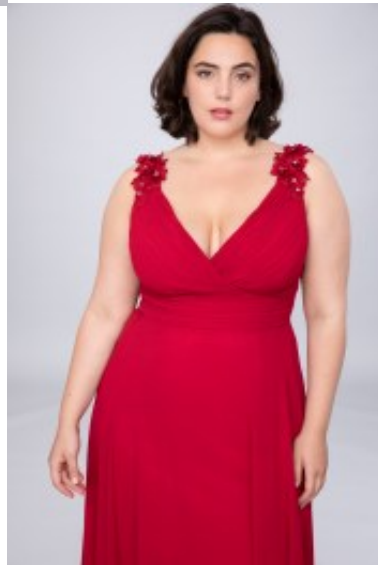
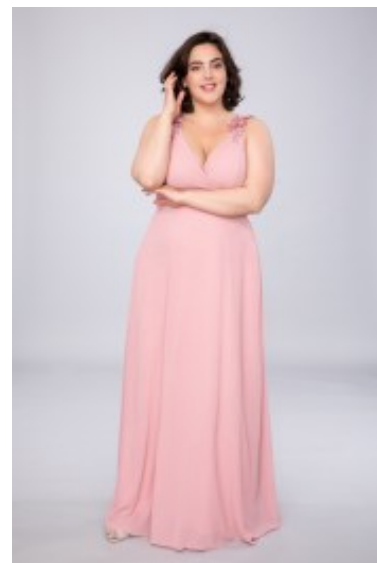


Gown 2103QS







Evening gown adorned with corsage, modified A line style maxi gown, form hug top with diep v-shaped neckline, open back garment with elastic band, high waistband with tulip skirt

Wijde opening 30 cm Gewaardeerd

Korting

2-3 Days



[Stel een vraag over dit artikel](#)

Fabrikant [EVA LOLA](#)

Gown adorned bow

Maxi gown with dip V neckline, slim fit styled party robe, body shape top with open back, beautiful cleavage, broad shoulder straps adorned with floral bow, elastic band, high pleated waistband adorned with tulip skirt, stretch polyester garment with satin lining, choice of 2XL / 3XL / 4XL / 5XL

Fit: body hugging

Material inner layer: satin lining

Neckline: V-shaped neckline

Pattern: modified A line gown

Details: adorned floral bow

Sleeves length: sleeveless

Material outer layer: stretch polyester

Washing instructions: do not tumble dry, dry clean only

Eenheden in doos: 1

// // //