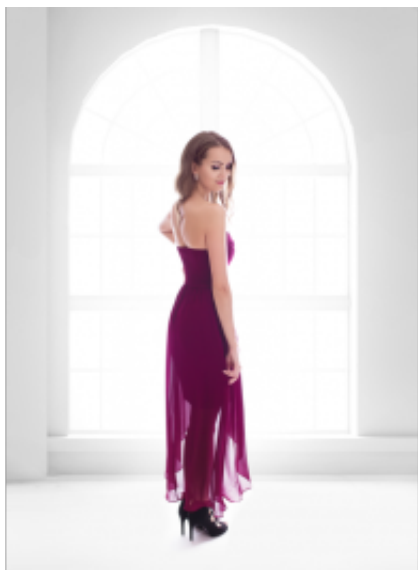


Cocktail Dress 1131





Cocktail dress with high scoop tulle neckline, strapless chiffon adorned with pearls, preformed cup with high pleated waistline, fish tail midi straight skirt  
Wij zijn de prijs van de korting gewaardeerd  
Korting

2-3 Days



[Stel een vraag over dit artikel](#)

Fabrikant [EVA LOLA](#)

### Beschrijving

## Strapless sheath gown

Cocktail dress, chiffon mix tulle adorned with pearls, form fit top with high scoop neckline, broad shoulder straps, preformed cup, H-form short gown with high waistline for slim look, midi length straight fish tail skirt, back zipper closure, choice of S / M / L

Fitting: form fit top

Material inner layer: satin lining

Neckline: scoop round neckline

Pattern: silhouet gala dress

Details: adorned with sequins

Sleeves length: sleeveless

Material outer layer: polyester fabric

Washing instructions: no tumble dry, non machine wash

Eenheden in doos: 1

// //