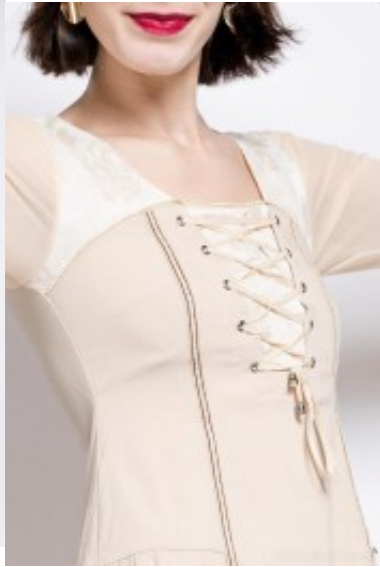


## Tunic 680





Printed long sleeves tunic, casual wear dress with frontal lacing, low cut scoop neckline & closed back, elastic waistband for body enhance fit, asymmetric skirt, trendy nylon mix rayon tunic

Washing instructions: do not tumble dry, machine wash at 30°C, gentle cycle  
Korting

**2-3 Days**



[Stel een vraag over dit artikel](#)

Fabrikant [CFait Pour Vous](#)

### Bohemian style tunic

Tunic with fantasy print, sleek style tunic dress with long sleeves, form-fitting body and wide scoop neckline, lace-up fastening, covered back, trendy stretch nylon mix rayon midi dress, flattering waistline, asymmetric skirt with ruffles, choice of S / M / L / XL / 2XL / 3XL

Material inner layer: satin lining

Neckline: scoop neck

Pattern: slip tunic dress

Details: decorated fantasy print

Sleeve length: long sleeves

Material outer layer: stretch nylon mix rayon

Washing instructions: do not tumble dry, machine wash at 30°C, gentle cycle

Eenheden in doos: 1

// //