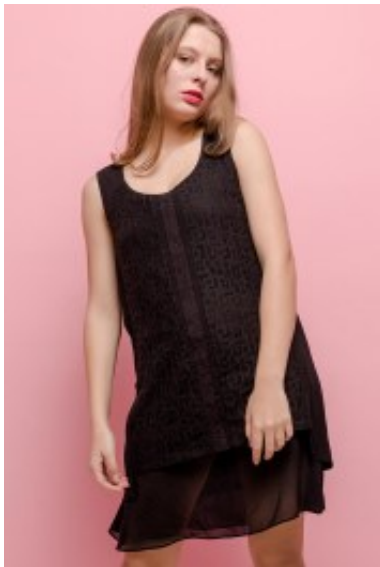
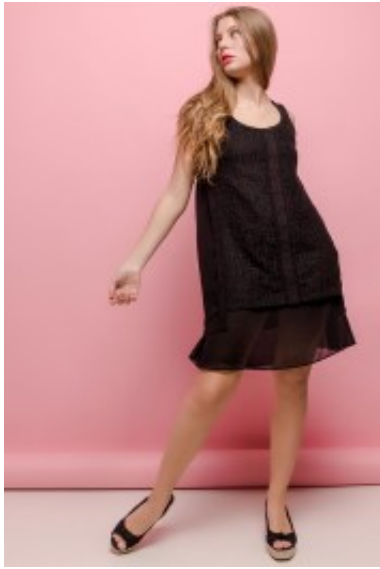


## Tunic 923





Lace tunic with scoop neckline, slim fit style with adorned skirt edge, midi length dress & covered back, must have summer/spring collection, trendy piece tailored from lace polyester with satin lining

Wanneer je bestelt op werdags vóór 15.00 uur 's ochtends wordt het gewaardeerd  
Korting

**2-3 Days**



[Stel een vraag over dit artikel](#)

Fabrikant [CFait Pour Vous](#)

### Beschrijving

**Lace tunic**  
Embroiled lace tunic, loose fit with wide scoop neckline, covered cleavage and back, zipper in the seam, midi length tunic dress with wide shoulder straps, flattering waist and straight skirt adorned edge, casual fit dress in mix polyester lace with satin lining, choice of M / L / XL / 2XL

Inner layer material: satin lining

Neckline: wide scoop neckline

Pattern: Midi length dress

Details: Embroidered lace

Sleeve length: Sleeveless

Outer fabric material: mix polyester lace

Washing instructions: Do not tumble dry, machine wash up to 30°C, gentle cycle

Eenheden in doos: 1

// //

---