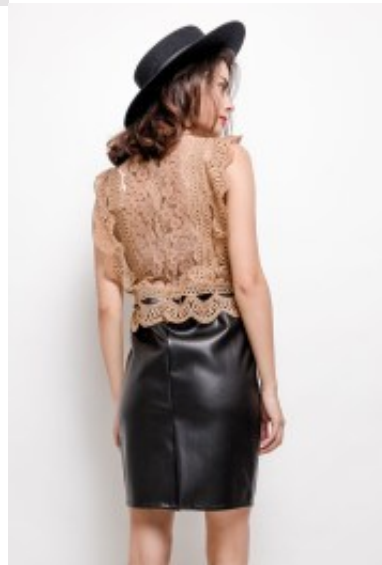
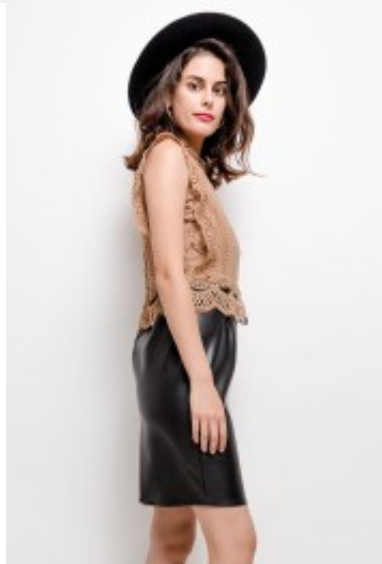


## Tunic 1037







Tunic with high scoop neckline, body flirt style, embroiled lace covered bodice, back zipper in the middle seam, trendy piece with broad shoulder straps, double colored garment, form enhance waistline combination of short skirt  
Washing instructions: do not tumble dry, dry clean only  
Korting

**2-3 Days**



[Stel een vraag over dit artikel](#)

Fabrikant [FLAM MODE](#)

### **Embroided lace tunic**

Tunic with scoop neckline, body flirt style with discrete zipper, embroiled lace covered bodice with ventilated satin lining, suitable as office wear, high pleated waistline with short straight polyester skirt, dual colored sheath dress with broad shoulder straps, choice of S / M / L.

Fit: loose fit

Material inner layer: satin lining

Neckline: scoop neckline

Pattern: slip dress

Details: covered cleavage

Sleeve length: sleeveless

Material outer layer: polyester mix lace

Washing instructions: do not tumble dry, dry clean only

Eenheden in doos: 1

// // //